

A large, stylized green globe with white outlines of continents, serving as the background for the entire page.

# ALSET<sup>®</sup>

I N T E R N A T I O N A L  
— LTD —

**WWW.ALSETINTERNATIONAL.COM**  
**SINGAPORE STOCK EXCHANGE: SGX 40V**

## DISCLAIMER

THIS PRESENTATION IS PROPRIETARY AND CONFIDENTIAL; IT MAY NOT BE REPRODUCED, IN WHOLE OR IN PART, AND MAY NOT BE DELIVERED TO ANY PERSON WITHOUT THE PRIOR CONSENT OF ALSET INTERNATIONAL LIMITED. THIS DOCUMENT IS BEING PROVIDED TO YOU SOLELY FOR INFORMATIONAL PURPOSES. IT IS NOT INTENDED TO BE, NOR SHALL IT BE CONSTRUED AS, AN OFFER, OR SOLICITATION OF AN OFFER, TO BUY OR SELL AN INTEREST IN THE COMPANY. NOTHING IN THIS DOCUMENT CONSTITUTES ACCOUNTING, LEGAL, REGULATORY, TAX OR OTHER ADVICE. ANY DECISION TO SUBSCRIBE FOR INTERESTS IN THE COMPANY MUST BE MADE SOLELY ON THE BASIS OF INFORMATION CONTAINED IN SUBSCRIPTION AGREEMENT, WHICH INFORMATION MAY BE DIFFERENT FROM THE INFORMATION CONTAINED IN THIS DOCUMENT, INCLUDING ANY DATA, PROJECTIONS, AND UNDERLYING ASSUMPTIONS ALL OF WHICH ARE ACCORDINGLY SUBJECT TO CHANGE AT ANY TIME WITHOUT NOTICE. IN PREPARING THIS DOCUMENT, WE HAVE RELIED UPON AND ASSUMED, WITHOUT INDEPENDENT VERIFICATION, THE ACCURACY AND COMPLETENESS OF ALL INFORMATION AVAILABLE FROM PUBLIC SOURCES OR WHICH WAS OTHERWISE REVIEWED BY US. WHILE INFORMATION PROVIDED HEREIN IS BELIEVED TO BE RELIABLE, THE COMPANY MAKES NO REPRESENTATION OR WARRANTY WHETHER EXPRESS OR IMPLIED, AND ACCEPT NO RESPONSIBILITY FOR ITS COMPLETENESS OR ACCURACY OR RELIABILITY. PAST PERFORMANCE OF PROGRAMS ARE NOT NECESSARILY INDICATIVE OF FUTURE RESULTS.

# ALSET<sup>®</sup>

I N T E R N A T I O N A L  
L T D

100%

100%

19.9%

100%

98%





# ALSET<sup>®</sup>

INTERNATIONAL  
— LTD —

## 10 DIVISIONS

SELECT DIVISION

**ALSET EHOME  
COMMUNITY  
DEVELOPMENT**

**ASSET  
MANAGEMENT**

**BANKING  
& FINANCE**

**DIRECT  
SALES**

**INVESTMENT  
DIVISION**

**SPAC  
DIVISION**

**FOOD  
& BEVERAGE**

**BIOMEDICAL**

**PRINTING  
AND PACKAGING**

**DIGITAL  
TRANSFORMATION**



# **ALSET EHOME** **COMMUNITY** **DEVELOPMENT** DIVISION

**ALSET EHOME COMMUNITY DEVELOPMENT  
& LAND DEVELOPMENT**



[CLICK BELOW BAR TO RETURN TO DIVISION MENU](#)



## EHOME FEATURES



SOLAR ENERGY  
SYSTEM



SMART HOME



HOME OFFICE



FILTERED WATER



PURIFIED AIR



ELECTRIC VEHICLE

## COMMUNITY FEATURES



SOLAR FARM



VEHICLE-TO-GRID



MODULAR ORGANIC FARM

## UPCOMING FEATURES



ENERGY EFFICIENT  
HEPA FILTERED HVAC



TELEMEDICAL



ROBOTAXI



ALSET  
MEMBERSHIP



HWH  
MEMBERSHIP



CRYPTO MINING  
SYSTEM

Visit Website:  
**Alset EHome Inc.**

Watch Video:  
**Alset EHome Concept**

Watch Video:  
**Tesla Installation**

Watch Video:  
**Home Crypto Mining**



## ALSET EHOME Community Development & Land Development



**Alset at Black Oak**  
Houston, Texas



**Ballenger Run**  
Frederick County, Maryland



**Northpark Woods**  
Porter, Texas



**Alset Villas**  
Magnolia, Texas



**Sorrento Bay**  
Lake Conroe, Willis



**Woodland Lakes**  
Huffman, Texas



**Sante Fe**  
Cleveland, Texas



## BUSINESS MODEL

**Alset EHome** focus on building a **Sustainable Healthy Living System** including a **REIT for long-term income**.

1

**BUILD FOR  
SALE**

Property Management Services included  
for Investors looking to earn rental yield.

2

**BUILD FOR  
RENT**



3

**TRANSFER TO**

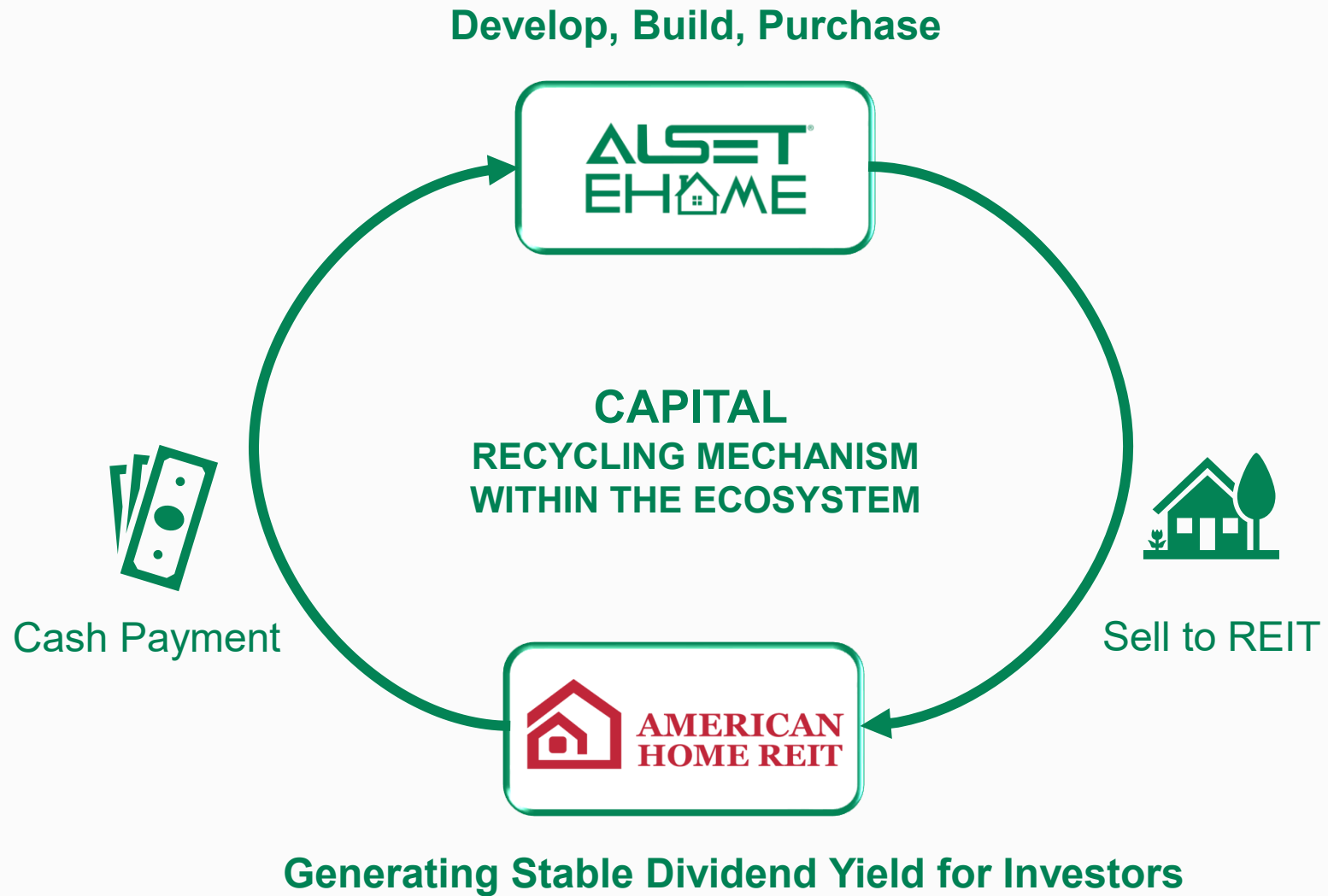


**AMERICAN  
HOME REIT**

**Target: 5% Yield**

Visit Website:  
[Alset EHome > Business Model](#)

Watch Video:  
[Alset EHome Business Model](#)



Watch Video:  
**American Home REIT**



# ASSET MANAGEMENT DIVISION

## REAL ESTATE INVESTMENT TRUST MANAGEMENT



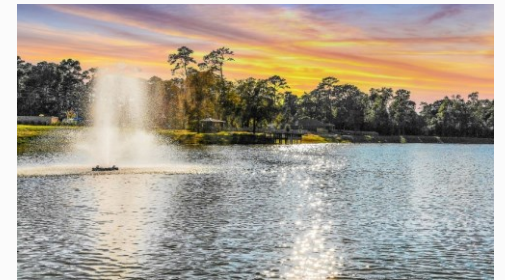
[CLICK BELOW BAR TO RETURN TO DIVISION MENU](#)

# REAL ESTATE INVESTMENT TRUST MANAGEMENT



## LEVERAGING ON ALSET EHOME RENTAL UNITS

- Recurring income streams
- Ensures quality control
- Economies of scale (Cost-effective management)



Visit Website:  
[American Home REIT](#)

# REAL ESTATE INVESTMENT TRUST MANAGEMENT



Acquired **5** Medical Properties

**3** Medical  
Facilities

Well-established  
with Clinic

**2** Acute Care  
Hospitals

195 hospital beds  
Total area: 380,000sqft

Targeted Return

**8%**  
**YIELD**



Ivy Brook, Connecticut



Fort Worth, Texas



Plano, Texas



Pittsburgh, Pennsylvania



Winter Haven, Florida

Visit Website:  
[American Medical REIT](http://AmericanMedicalREIT.com)

# ASSET MANAGEMENT

DIVISION

## FUND MANAGEMENT



[CLICK BELOW BAR TO RETURN TO DIVISION MENU](#)

# MUTUAL FUND MANAGEMENT



**AF Large Cap  
Share  
Buyback  
Fund**

**AF Income  
Fund**

**AF Risk On /  
Risk Off Fund**

**AF Defensive  
Growth Fund**

## AMERICAN FIRST MUTUAL FUND

### EMOTION-FREE MUTUAL FUNDS

Quantitative mutual funds are known to be some of the most innovative in the investment universe. As such, they may often deploy some of the industry's most groundbreaking technologies.

Visit Website:  
**AmericaFirst Quantitative Funds**



# CRYPTO DIGITAL ASSET MANAGEMENT

LAUNCHING IN 2022



**CREDAS**  
CAPITAL

DIGITAL ASSET  
EXCHANGE-TRADED PRODUCT (ETP)  
**SuperCrypto15 (SC15)**

Target listing in **Swiss Exchange**

Joint Venture:



Visit Website:  
**Credas Capital**



True Partner  
Capital

## INSTITUTIONAL FUND FOR HEDGING

# TRUE PARTNER CAPITAL (HKSE: 8657)

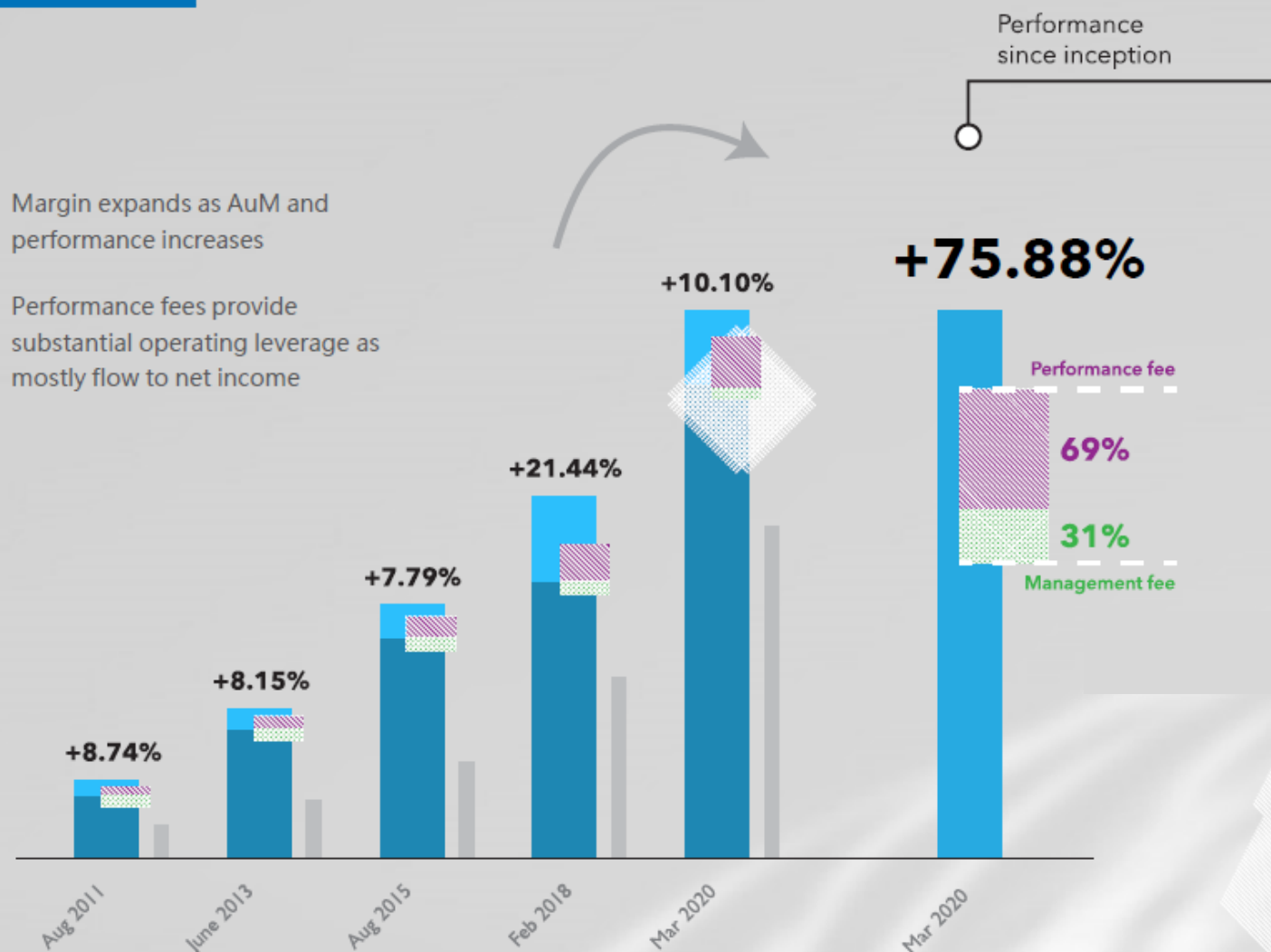
Market Cap: US\$ 47.5 Million | AEI ownership: 15.53%

True Partner is an active  
global volatility arbitrage fund

**AUM over  
USD \$1.7 Billion**

as of 1 Dec 2021

Earnings power and operating leverage



Visit Website:  
**True Partner**





## **INSTITUTIONAL HEDGE FUND**

A scalable and highly liquid proprietary algorithmic trading investment fund with attractive risk adjusted returns relative to the volatility and unpredictability of the markets

Visit Website:  
[LiquidValue Asset Management](http://www.liquidvalueassetmanagement.com)

# **ASSET** **MANAGEMENT** DIVISION

**MARKET MAKING**

**SENTINEL**  
**Brokers LLC**

CLICK BELOW BAR TO RETURN TO DIVISION MENU



# SENTINEL Brokers LLC

A FINRA-registered broker-dealer that operates as a financial intermediary, facilitating institutional trading of municipal and corporate bonds as well as preferred stock and market making.





# **BANKING & FINANCE** DIVISION

**DIGITAL BANKING AND FINANCE**

AmericanPacific  
Bancrp

[CLICK BELOW BAR TO RETURN TO DIVISION MENU](#)



Inventory Finance

Product Production Finance

Working Capital Finance

Receivable Finance

Manufacturing Equipment Finance

Visit Website:  
**American Pacific Bancorp**

# DIRECT

# SALES

DIVISION

## DIRECT SELLING COMPANIES



[CLICK BELOW BAR TO RETURN TO DIVISION MENU](#)



### DIRECT SALES

The Happy Co having over **80,000** members globally since its launch in 2017.



### DIRECT SALES

Founded in 2019, HWH World have over **30,000** members in Korea, and promising plans for global expansion.



### DIRECT SALES

A global wellness company with decades of history in **R&D and Sales** of consumer nutrition products.



### TRAVEL

Members can **Travel with Discounts** on hotels, resorts, cruises, and condos, plus extra savings on car rentals, activities, flights, and shopping.

Visit Website:  
**The Happy Co**

Visit Website:  
**HWH International**

Watch Video:  
**HWH Products & Services**

Visit Website:  
**RBC Life**

Visit Website:  
**Hapi Travel**

The Happy Co<sup>®</sup>

HWH  
INTERNATIONAL

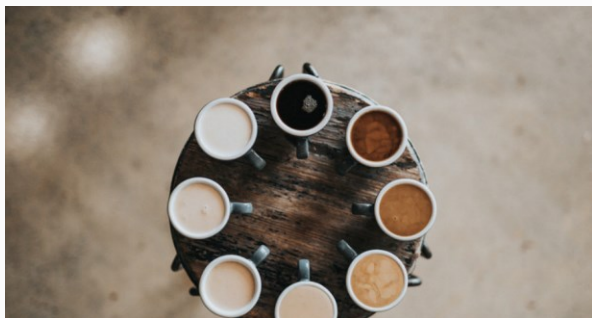
RBC LIFE  
ROYAL BODYCARE





## INVESTING IN PRODUCT INNOVATION

We spend millions and years developing and acquiring innovative products **for our members.**



**HAPI Functional Drink**



**HAPI Functional Supplement**



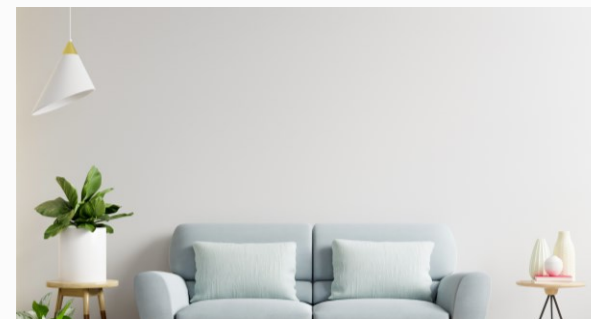
**HAPI Functional Food**



**HAPI Skincare**



**HAPI Wellness**



**HAPI Home Improvement**



Click on each category to view more details.

# HWH Services

## REVOLUTIONARY SERVICES

HWH provide our members with exclusive access to services that are  
**unlike any direct selling company you've ever seen.**



**HAPI Finance**



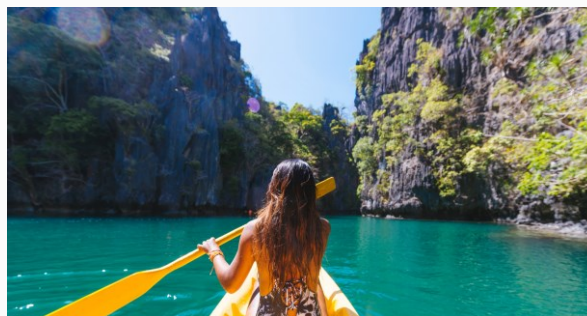
**HAPI Home**



**HAPI Wealth Builder**



**HAPI Meal**



**HAPI Travel**



**HAPI Insurance**



Click on each category to view more details.

# INVESTMENT DIVISION

## IMPACT PRODUCT INVESTMENTS



[CLICK BELOW BAR TO RETURN TO DIVISION MENU](#)





 PURADIGM®

AIR PURIFIER

Visit Website:  
Puradigm



  
mojiLife™  
LUXURY FRAGRANCE

AROMATHERAPY

Visit Website:  
MojiLife



  
THE SCIENCE OF SMALL

NUTRICEUTICAL NANO-PRODUCTS

Visit Website:  
Nano9

**SPAC** DIVISION

**SPECIAL PURPOSE ACQUISITION COMPANY**



[CLICK BELOW BAR TO RETURN TO DIVISION MENU](#)



**ALSET SPAC GROUP is seeking target companies  
interested to raise capital and listing status  
on major stock exchanges in the United States**



**Real Estate Property**



**Banking & Finance**



**Network Marketing**



**Food & Beverage**



**Hospitality**



**BioTechnology**



**Renewable Energy**



**E-Commerce & Social Media**

Visit Website:  
**Alset SPAC Group**



# FOOD & BEVERAGE DIVISION

CAFES, COFFEESHOP, CENTRAL KITCHEN



[CLICK BELOW BAR TO RETURN TO DIVISION MENU](#)



#### 4-IN-1 CONCEPT CAFE

4-in-1 Concept

Café with Co-workspace, VR/AR Room & Hapi Travel



#### SINGAPORE COFFEESHOP

We have a Killiney franchised stall at 9 Penang Road, Singapore. A renowned local brand since 1919.

**A HEALTHY MEAL = HEALTHY EXPERIENCE FOR MIND AND BODY**



#### KETO SUBSCRIPTION MEAL

Partnering with Ketomei to serve Keto-diet meal in Hapi Cafe.  
Members are also able to sign up for Ketomei subscription meal plan



#### HEALTHY SUBSCRIPTION MEAL

Having healthier meal without much hassle to prepare. Order Fit Fresh subscription meal plan and enjoy freshly made meal.

Visit Website:  
**Hapi Cafe**

Watch Video:  
**Hapi Café Concept**

Visit Website:  
**Killiney**

Visit Website:  
**KetoMei**

Visit Website:  
**Fit Fresh**

FOOD & BEVERAGE

CO-WORKSPACE



HAPICAFFE

- 4-in-1 Concept -

VR/AR ROOM  
METAVERSE GAMING / FITNESS

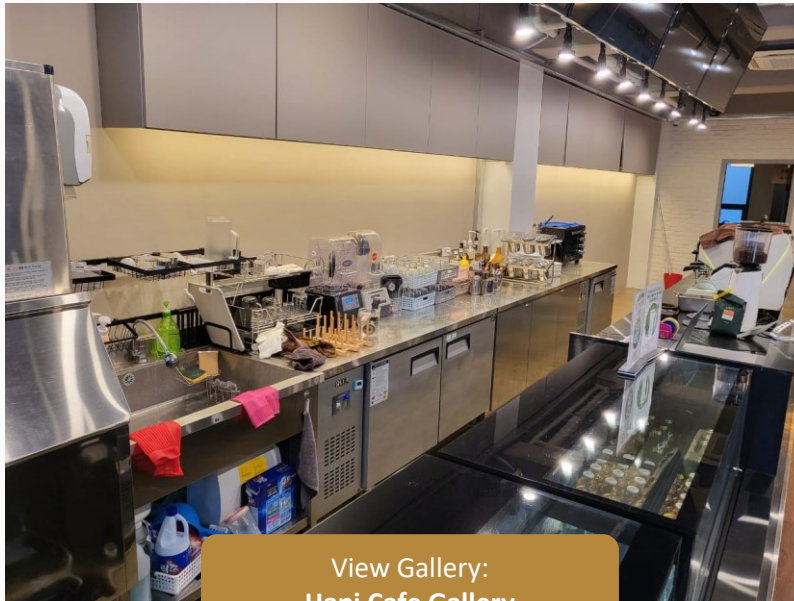
HAPI TRAVEL

Watch Video:  
Hapi Café Concept



# HAPI CAFE

Gangnam | Seoul | South Korea



[View Gallery:](#)  
Hapi Cafe Gallery





4 Level Building in Utah to support the HWH Gig Economy.



## Hapi Cafe in Utah, Salt Lake City, United States

Land Size: 2.34 Acres | Location: 644 North 2000 West Lindon, Utah

View Deck:  
Utah Building Office



# Hapi Café in Utah, Salt Lake City, United States

## Ground Floor

**Ground Floor:** Hapi Cafe, VR/AR Room, Trip Flic



High Ceiling & Spacious



Hapi Cafe

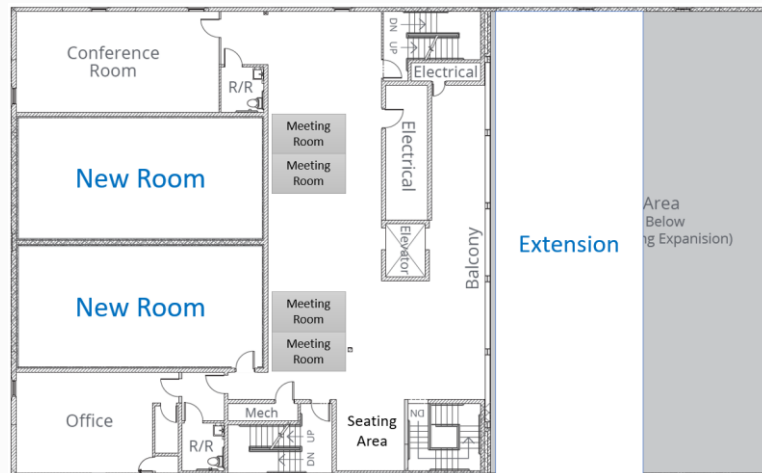
VR/AR Room & Fitness



Hapi Fit and Trip Flic Room

## 1<sup>st</sup> Floor

**Level 1: Co-Workspace:** Meeting Rooms | Conference Rooms | Seminar/Training Room | Open Area



Meeting Rooms



Conference Room





At 9 Penang Road, #01-13,  
Singapore 238459



**Killiney** is one of the oldest franchise born out of Singapore. **Founded in late 1919**, in an antiquated yet humble shop, Killiney has now an extensive menu offering a wide variety of local delicacies with 60 over stores globally.

### EXPANSION

Leveraging on Alset Group global footprint, Alset is in talks with Killiney to work on a strategic partnership basis to expand Killiney franchise into **Korea, Hong Kong, Macau, US and China.**

Visit Website:  
**Killiney**





Killiney Signature

Local Delights

Traditional Toast

All-Time-Favourite

Freshly brewed  
Coffee / Tea

Visit Us @ #01-13

**OPEN DAILY**

Weekdays :8.00am - 5.00pm

Weekends & :8.30am - 5.00pm  
Public Holidays



**ketomei** **FIT FRESH**

**CENTRAL KITCHEN | SINGAPORE**

239 Pandan Loop, #07-01/04  
Food Concept@Pandan Singapore 128425

Visit Website:  
**KetoMei**

Visit Website:  
**Fit Fresh**







Cook



Chill



Pack & Seal



Deliver



Heat

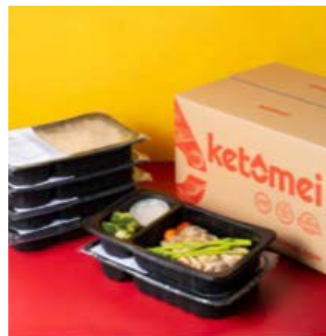


Enjoy



**ketomei**

Keto Subscription Meal Plan



Extremely Low-Carbs  
100% Keto compliant



Central Kitchen for Subscription Meal Plan

**FIT FRESH**

Nutritious Subscription Meal Plan





# BIO MEDICAL DIVISION

## BIOMEDICAL TECHNOLOGY



[CLICK BELOW BAR TO RETURN TO DIVISION MENU](#)



## IMPACT PRODUCTS DEVELOPMENT & RESEARCH



**Impact Biomedical** drives mission-oriented research and development that advances drug discovery and development for the prevention, inhibition, and treatment of neurological, oncology and immuno-related diseases.

Visit Website:  
[Impact BioMedical Inc.](#)





## RESEARCH & DEVELOPMENT

### **Vivacitas Oncology**

A clinical-stage company utilizing next-generation science and technology to enable new options for difficult-to-treat cancers.

Visit Website:  
**Vivacitas**

# Summary: Impact Biomedical FDA/MedTech Pipeline U.S.



ASSET	PRECLINICAL	PH I	PH II	PH III	APPROVED	IP	DESCRIPTION
LineBacker	→					2029/2036	Small molecule x-bonded polyphenol compounds with potential application in neurological and inflammatory disorders.
Equivir	→					2036	Combination of generally recognized as safe(GRAS) polyphenols with potential application as antiviral, supplements, or medication.
Laetose™	→					2029/2036	Sugar and inositol with potential to lower glycemic index, HbA1c, and beta cell protective effect as part of healthy diet.

## VIVACITAS ONCOLOGY



AR-67	→					2035-2040	Next generation Capmptotheclin compound including proprietary synthesis method with potential in tough to treat cancers. Examples include recurrent glioblastoma(U.S.Orphan Drug Status), colorectal, pancreatic, ovarian, and non-small cell lung cancer.
Rubitecan	→					TBD	Camptotheclin with potential oral application in late-stage pancreatic cancer.

Visit Website:  
Impact BioMedical Pipeline



# PRINTING AND PACKAGING

DIVISION

## PACKAGING PRODUCTION SERVICE



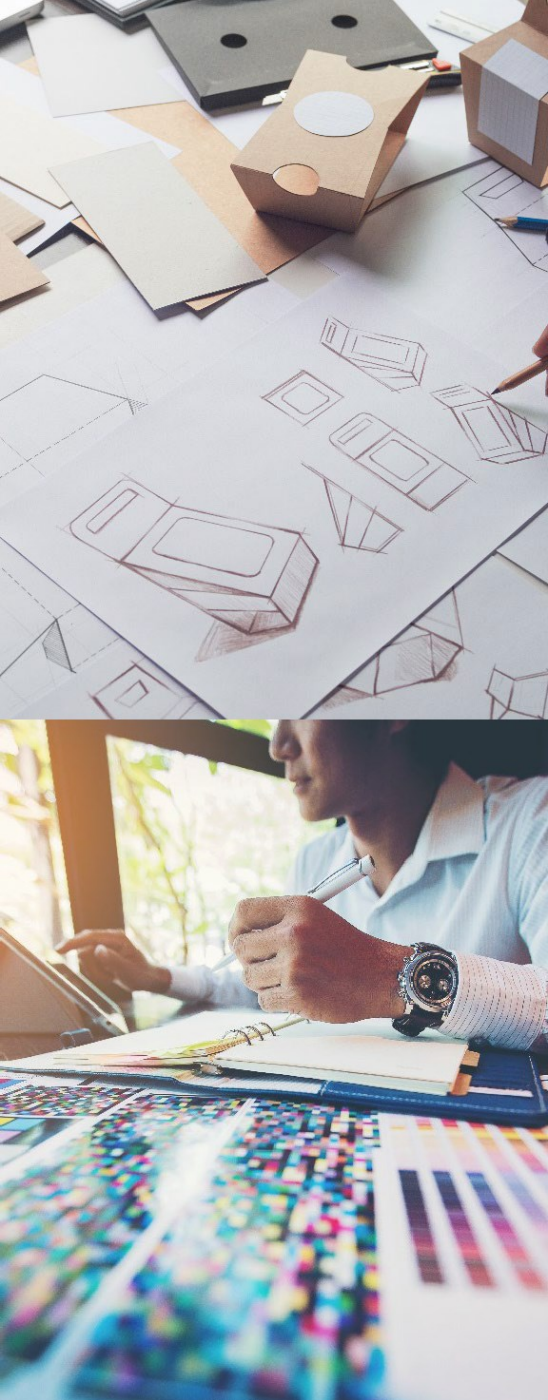
[CLICK BELOW BAR TO RETURN TO DIVISION MENU](#)



Premier Packaging's innovative designs deliver functionality, marketability, sustainability, and anti-counterfeiting technology.







- Produces custom paper board packaging
- Serving Clients in the Pharmaceutical, nutraceutical, beverage and specialty foods
- Intelligent packaging and document security printing services
- Printed materials, folding cartons, security paper, vital records, birth certificates, secure coupons, parts tracking forms
- Smart packaging –authentication technologies with integrated augmented reality providing brands with “always on” media channel

Visit Website:  
**Premier Packaging Corp.**

# DIGITAL TRANSFORMATION

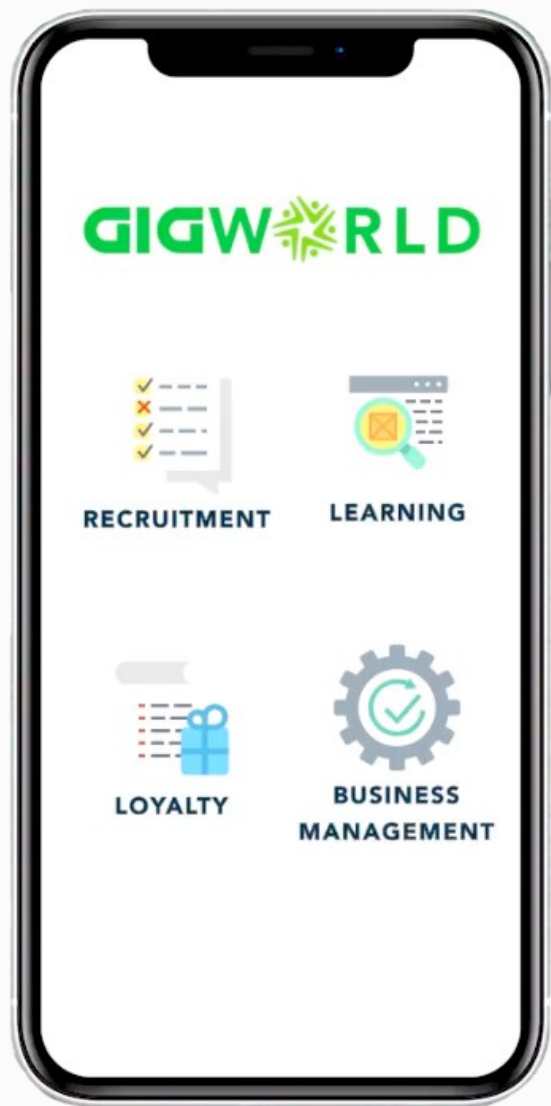
DIVISION

## INFORMATION TECHNOLOGY



[CLICK BELOW BAR TO RETURN TO DIVISION MENU](#)

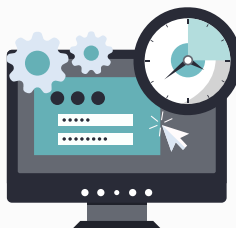




## Core Elements for Network Marketing Industry



eCommerce



BackOffice



Social



Zoom Meeting Integration

Visit Website:  
GigWorld Inc.

Watch Video:  
GigWorld App





VEI  
号通联盟

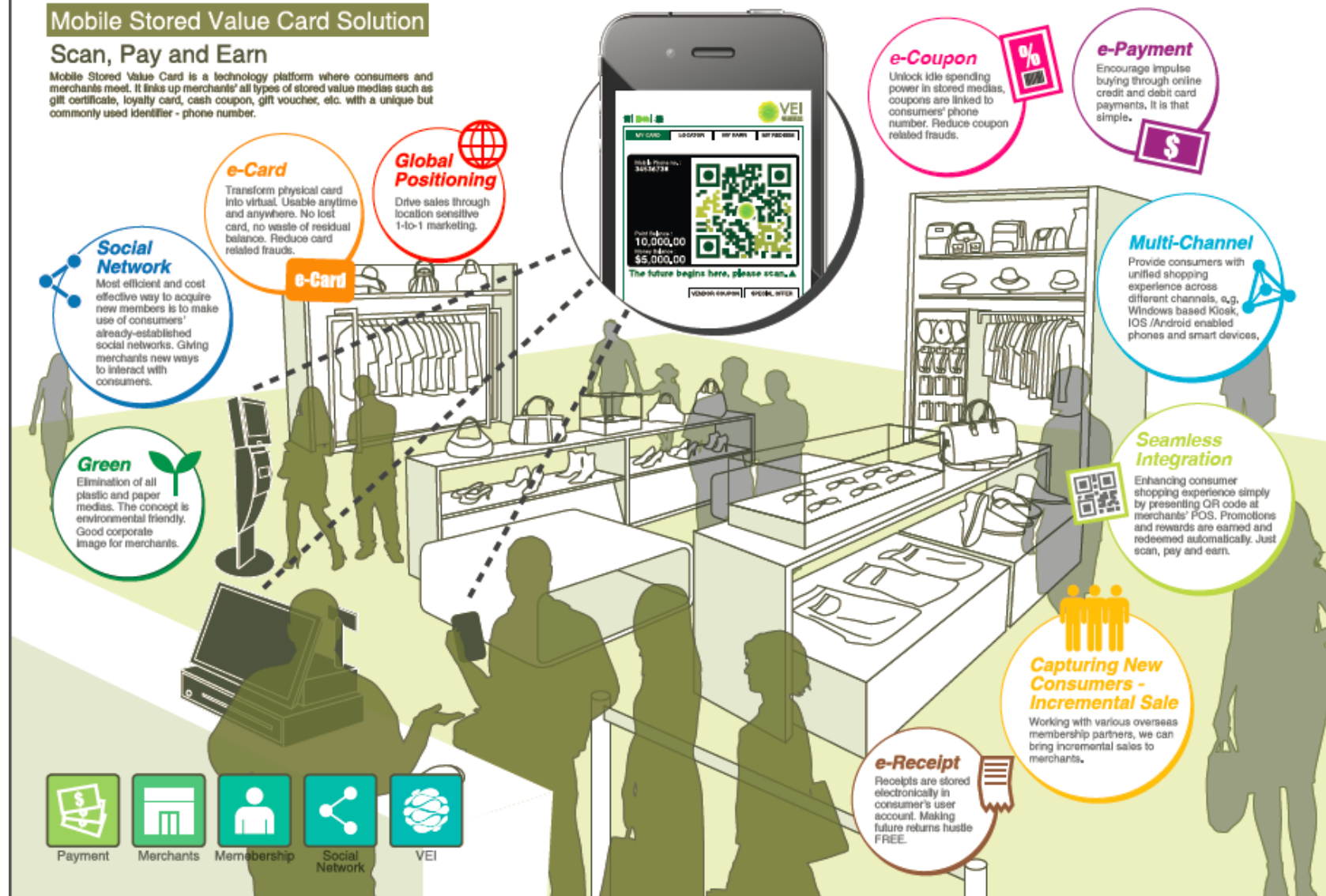
## GLOBAL PAYMENT SYSTEM



### Mobile Stored Value Card Solution

#### Scan, Pay and Earn

Mobile Stored Value Card is a technology platform where consumers and merchants meet. It links up merchants' all types of stored value medias such as gift certificate, loyalty card, cash coupon, gift voucher, etc. with a unique but commonly used identifier - phone number.



Visit Website:  
Value Exchange International



## CORPORATE CLIENTS



香港復康會  
The Hong Kong Society  
for Rehabilitation



JAPAN AIRLINES



watsons water  
屈臣氏蒸餾水

Watson's Wine



奇華餅家  
kee wah bakery



westKowloon  
西九文化區



## Operate in... GREEN & TECHNICAL BUSINESS MODEL

Since 2011, VEII help different companies developed over 300,000 e-membership in the world.

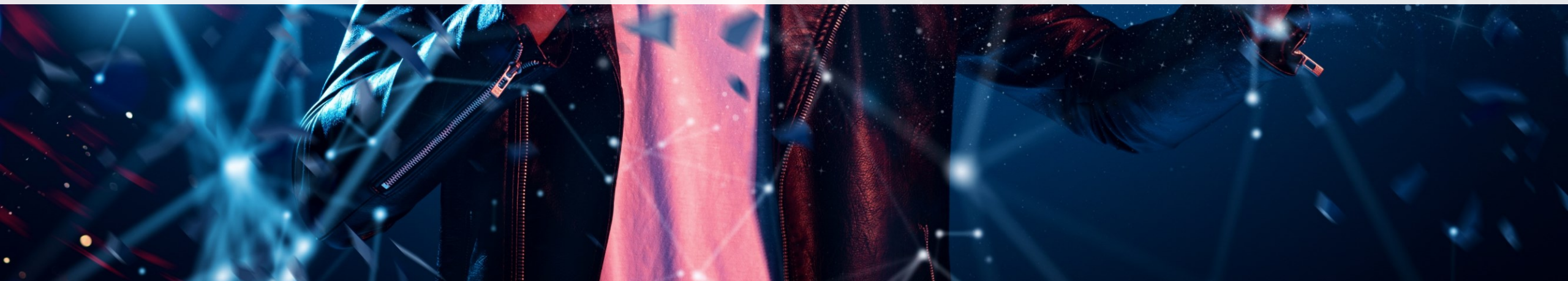
Saving paper, trees and petroleum.

Visit Website:  
Value Exchange International





Incubate and invest in metaverse related projects and work with **Hapi Cafe**, to set aside space for patrons of its cafes to enter existing **Virtual Reality** rooms or games





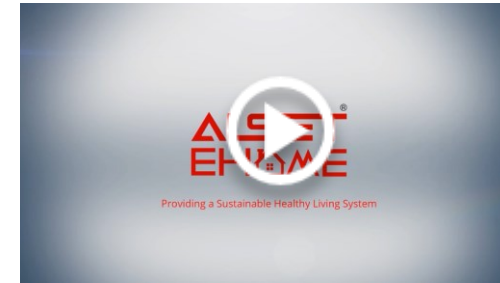
# ALSET CORPORATE VIDEOS



The New Alset



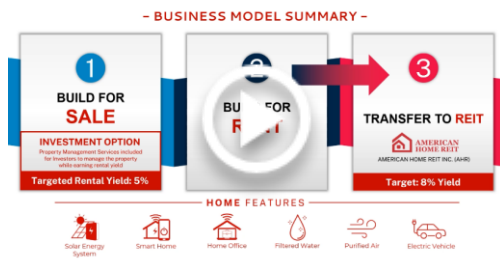
AEI 2022 Corporate Update



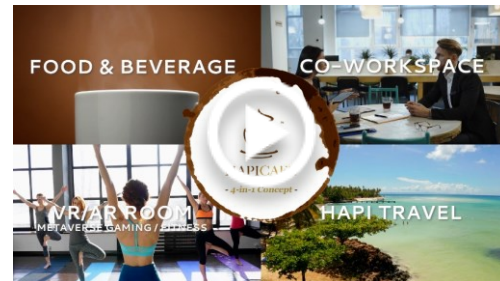
Alset EHome Concept Video



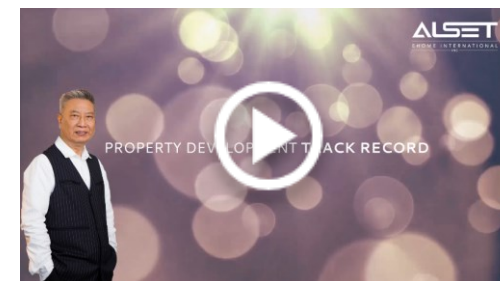
Alset EHome Corporate Video



Alset EHome Business Model



Hapi Cafe Introduction



Mr Chan's Property Track Record



Recap on Recent Ecosystem Development



American Home REIT



AEI Business Overview



AEI New Feature: Crypto Mining



American Pacific Bancorp Introduction

# EXTERNAL RELATED VIDEOS



IT HAPPENED! Elon Musk JUST REVEALED The First Sustainable Tesla Home!



Elon Musk Officially Revealed The First Tesla Home!



IT HAPPENED! Elon Musk JUST REVEALED Tesla's First Tiny House



JUST IN! Elon Musk Reveals The First Tesla Home!



JUST IN! Elon Musk Reveals The First Tesla Home!



Tesla JUST OFFICIALLY Revealed Their NEW Homes



Alset EHome International: Diversified Operations Accelerating Sustainable Healthy Living



Alset EHome International: Diversified Operations Accelerating Sustainable Healthy Living



Your future house will come with a FREE Tesla | The Tesla home is coming alive NOW with Alset eHome



Alset Ehome has a lot of new things cooking !



Tesla Short Sellers through the years 😊 Let's have a little fun 😊



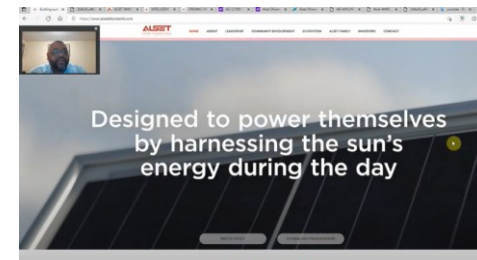
Alset Ehome is on cost and ahead of schedule, could do some big moves at the end of year



"Health, Wealth & Happiness" Alset Ehome's community



Alset EHome Is Eco Friendly Living on Steroids --- \$AEI



AEI Alset EHome's, Smart Homes update



# CHAIRMAN'S TRACK RECORD

From just **5 out of 35** previously restructured companies:



**Fai H Chan**  
Chairman

Approx. Current **Market Cap Over**  
**USD 19.9 Bn**  
AND GROWING

[View Latest  
Financial  
Update](#)

Bringing in **Profits** of over  
**USD 1 Bn**  
PER ANNUM

2020/2021 Financial Update  
of 5 companies  
**USD 18.1 Bn**

2020/2021 Revenue  
approximately  
**USD 10.3 Bn**

2020/2021 Profits  
approximately  
**USD 1.4 Bn**

**ZH International Limited**  
Formerly Known as Heng Fai Enterprises



**Hong Kong Stock Exchange Listed**  
Restructured from the verge of Bankruptcy



**Global Medical REIT**



**New York Stock Exchange Listed**  
Founded and Funded from Ground Zero



**SingHaly! Ltd**  
Formerly Known as SingXpress Land



**Singapore Exchange Listed**  
Restructured from the verge of Bankruptcy



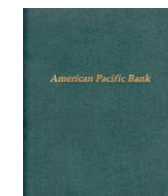
**China Gas Holdings Ltd**



**Hong Kong Stock Exchange Listed**  
Restructured from the verge of Bankruptcy



**American Pacific Bank**



**NASDAQ Listed**  
Recapitalized from the verge of Bankruptcy



[www.fai185.com](http://www.fai185.com)

[www.chanhengfai.com](http://www.chanhengfai.com)

[Watch Video](#)

[观看视频](#)

## DIRECTORS & MANAGEMENT



**Mr Chan Heng Fai**



**Mr Chan Tung Moe**



**Dr Lam Lee G**



**Mr Lui Wai Leung, Alan**



**Mr Lim Sheng Hon, Danny**



**Mr Tao Yeoh Chi**



**Mr Wong Tat Keung**



**Mr Chan King Fai**



**Mr Wong Shui Yeung**

## MANAGEMENT & ADVISORS



**Dr Toh Soon Huat**



**Charley Mackenzie**



**Frank D Heuszel**



**Vincent Lum**



**Antony Chan**



**Michael Gershon**



**Ronald Wei**



**John Thatch**



**Sharmar O'Bryant**



**Nathan Lee**



**Aileen Ang**



**Andrew Stuber**



**Dave Price**



**Chris Lee**



**Jason Grady**



**Todd D. Macko**



**Andrew Tan**



**Alex Liu**



**Hunter H**



**BJ Jun**



**Dave Lee**



**Shirley Lau**



**Liaw WeiSheng**



**Adam Tan**





**THANK YOU!**

Visit Us at:

<http://www.asetinternational.com>

For enquiries, please contact:

[contact@asetinternational.com](mailto:contact@asetinternational.com)